



Welcome to the Charmed Tote by Charmed By Ashley!

This great little tote features 1 Zipper pocket on the front, a large sectioned pocket on the rear, customizable slip pockets on the inside.

The bag measures approx. 15" Wide, 15" Tall, 4" deep

Fabric

Accent fabric - 1/2 a Yard

Vinyl (heavy weight fabric such as waterproof canvas, cork, duck canvas) - 1/2 a yard

Lining fabric (recommend heavy weight fabric to help keep bag rigid) - 1 Yard

Strapping -

size #3 zipper - 9" in length

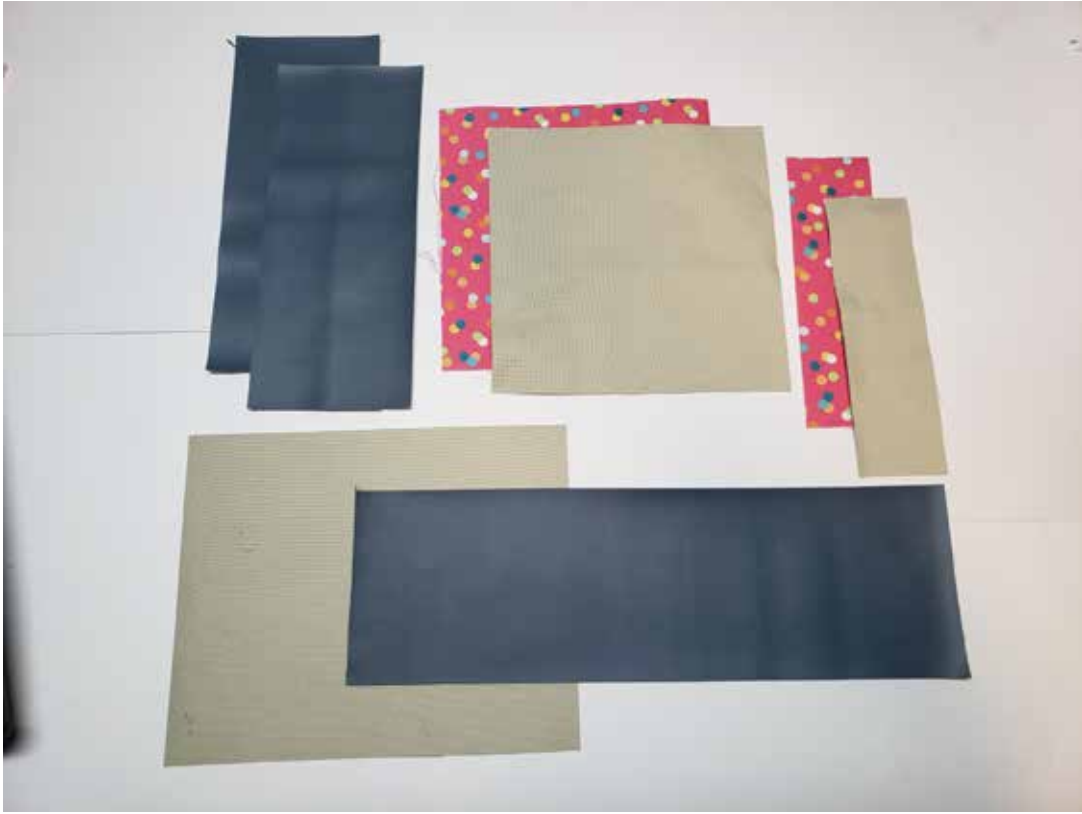
Please share your finished bag with me!

www.facebook.com/charmedbyashley

www.instagram.com/charmedbyashley

Permissions - please do not recreate this bag in any way and call it your own.
making this bag and selling on a small home business scale is allowed.





Measurements will be split into 4 pages to keep things organized.
we will start with the front outer panel.

Front Panel

Zipper - 9" Long

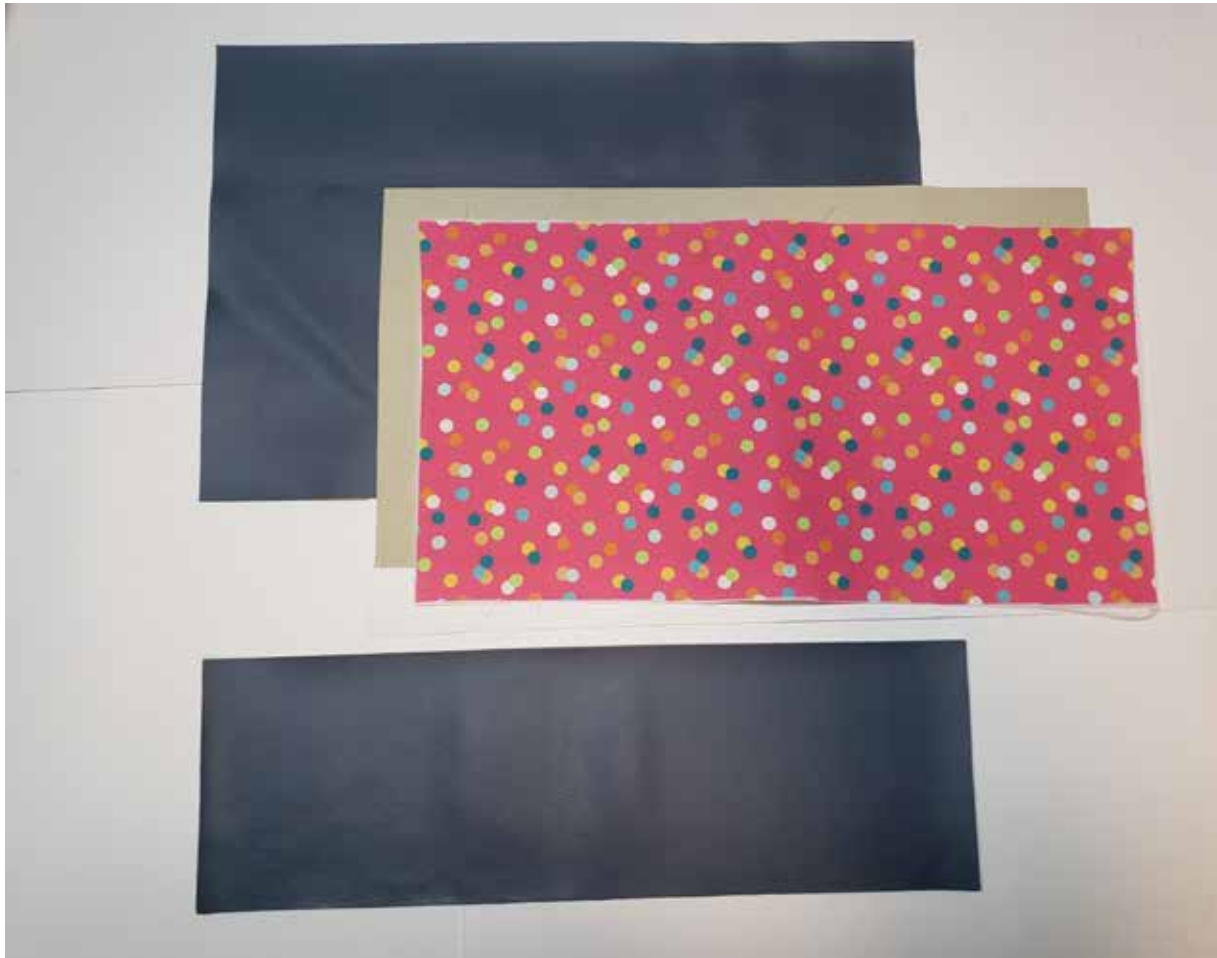
Top outer and lining zipper pieces - *Cut 2* - 2 ½" x 8 ½"

Bottom outer and lining zipper pieces - *Cut 2* - 8 ½" x 8 ½"

Side panels - *Cut 2* - 4 ½" x 10 ½"

Base panel - *Cut 1* - 5" x 16"

Back zipper pocket lining piece - *Cut 1* - 10 ½" x 8 ½"



Back outer panel

Base panel - 1- 5" x 16"

Main back panel- Cut 1- 11½ x 16" - vinyl or main fabric

Pocket panel - Cut 2- 8 ½ x 16" 1 lining 1 accent fabric



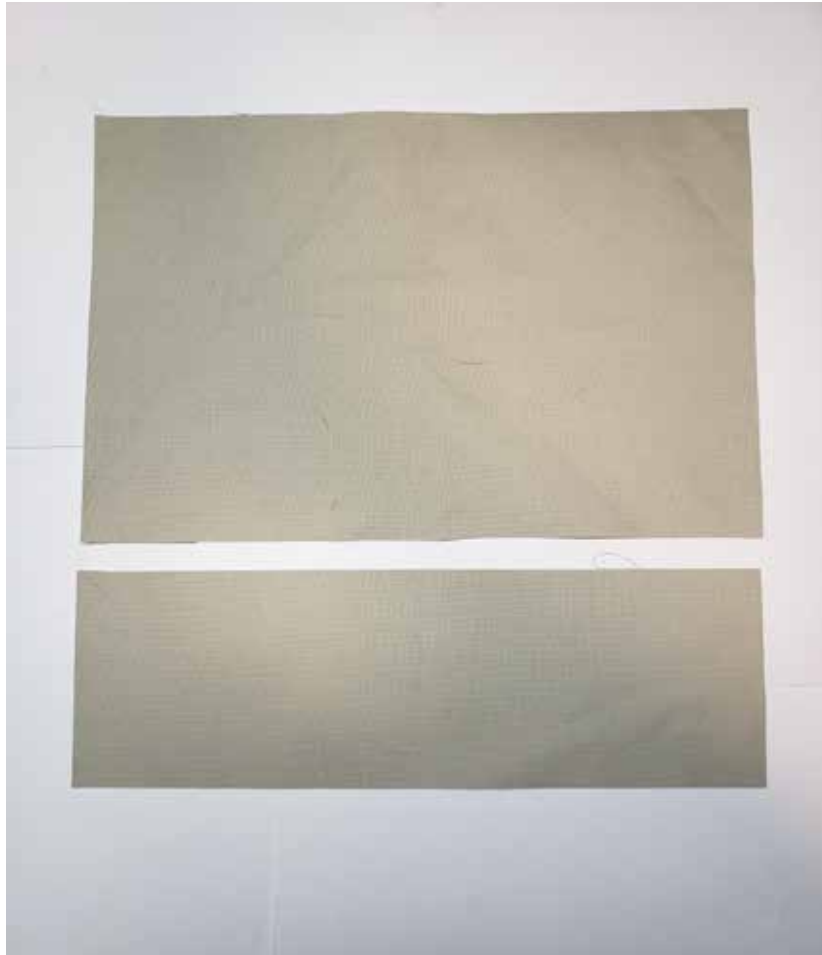
Lining pocket panel

Base panel - cut 1 - 5" x 16"

Large panel - Cut 1- 11½" x 16"

Pocket Piece - Cut 1 - 6" x 16"

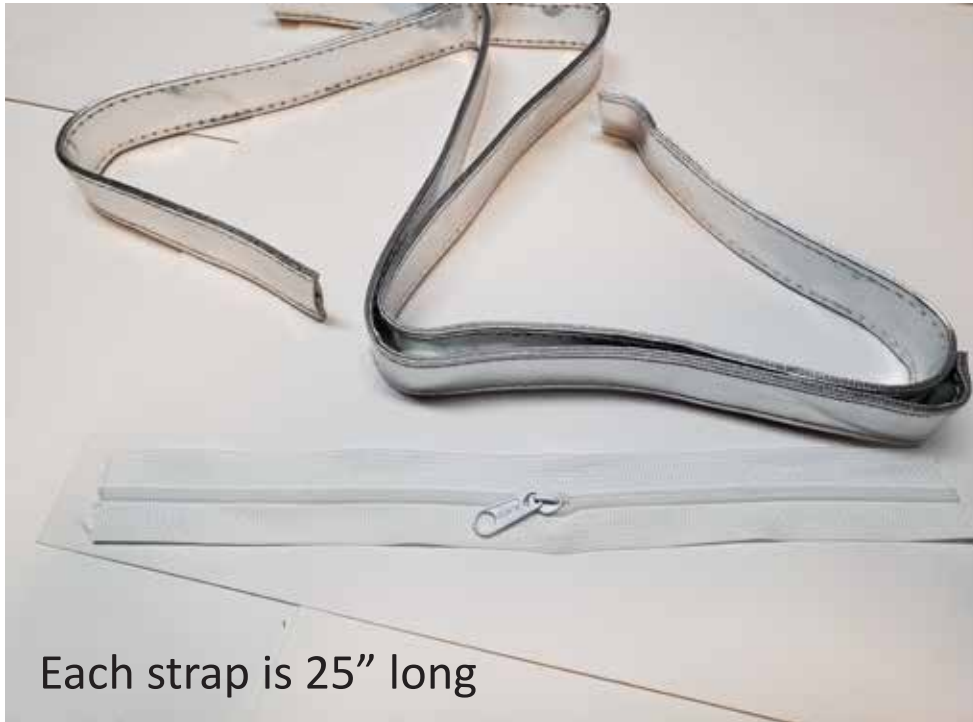
*This piece i made out of waterproof canvas



Plain lining

Base panel - Cut 1 - 5" x 16"

Large panel - Cut 1 - 11½" x 16"



For this tutorial i recycled an old purse strap. to make your own cut fabric 4" wide fold in fabric and fold again to create a 1" strap.

I used a #3 zipper, my zipper may look different but i like to use zipper by the yard.

Zipper by the yard is sold in a strip of zipper tape by the yard and you choose your zipper pulls

wonderful and creates less waste!